

No. 717

Cutouts with the portable circular saw



A

Description

While the jigsaw is primarily used for rotary or contour cuts, the portable circular saw is the ideal machine for precise and absolutely straight cutouts of any sheet material. You require the unique guide rail system from Festool to also achieve this precision. This guide rail in connection with a Festool portable circular saw and the matching saw blade produces a perfect cutting quality in almost every material on the construction site or for ambitious DIY work.



717/01

B

Tools/Accessories



The following tools and accessories are used in this application example:

Designation	Order No.
Plunge-cut saw TS 55 EBQ Plus	561162
Guide rail FS 1400	491498
2x one-hand lever clamp FS-HZ 160	491594
Mobile dust extractor CTM 26 E	583848
Multifunction table MFT 3	495315
Matching saw blade depending on the material (see table)	*

*Please obtain the order no. from the Festool main catalogue or from the Festool website.

C

Preparation/Set-up



717/02

Saw blade changing

- Disconnect the machine from the mains
- Push the FastFix lever down to the stop
- Push switch lock up and push sawing unit down until it locks into place



717/03

- Open screw with Allen screw
- Remove saw blade
- Clean flange
- Use new saw blade i.a.w. table. The direction of rotation of saw blade and machines must match
- Mount outer flange and tighten screw



717/04

- Push FastFix lever back.

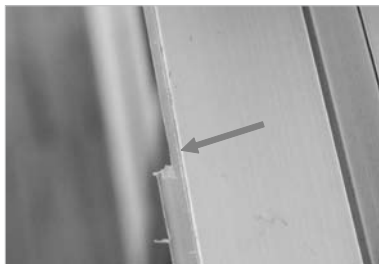


717/05

Guide play

- First adjust the green eccentric jaws in the base plate of the portable circular saw to the guide rail ensuring there is no backlash.

It should be possible to move the machine on the guide rail without any significant resistance.



717/06

Cutting into the splinterguard at the guide rail

- Prior to the work step, a cut is made into the splinterguard of the guide rail.
- To do this the cutting depth display must be set to 15 mm.
- The cutting depth indicator on the scale is pressed in and, at the same time, set to the desired depth.
- Cut into the splinterguard along the entire length.
- The cutting edge of the splinterguard is thus precisely coordinated to the circular saw and can be used as a scribe line (Fig. 717/06).



717/07

E Procedure

- Position the material to be processed on a work bench (e.g. multifunction table MFT 3) or on a wooden support and fix this using lever or fastening clamps.
- Then align the guide rail according to the scribe line to the workpiece and clamp to the workpiece using the collets.
- Now connect the extractor hose of your mobile dust extractor to the portable circular saw.
- Place the portable circular saw in front of the workpiece on the guide rail and adjust the cutting depth to correspond to the workpiece thickness. The blade should not project more than 3-5 mm out of the workpiece.



717/08



717/09

- Unlock the plunging device with your thumb by pushing the green knob forwards.
- Now switch on the machine and plunge the saw blade just before the workpiece.
- Important: When plunge cutting, the saw blade must still not touch the workpiece to prevent kickback.
- Using a slow and consistent advance feed you achieve a tear-free and completely straight cut.



Tip: Particularly when cutting doors to length after laying parquet or laminate, this method can be used for clean and absolute tear-free cuts. Even for doors painted white the splinterguard guarantees a perfect cut without any nasty surprises! You shouldn't take the old carpenter's saying "plane down a door" too literally because the electronic planer would be the completely wrong tool here!

F

Saw blade table



717/10

Standard saw blade

For all wooden composites, building panels and soft plastics, rough cut

Type	Part No.	AT 65 AP 65	TS 75	AP 85 AP 88 AXP 88
190x2.8x30 W16	486296	•		
210x2.6x30 W18	493197		•	
240x2.8x30 W22	437042			•



717/11

Panther saw blade

For quick cutting with less force, especially for rip-cuts in solid wood

Type	Part No.	TS 55 ATF 55 AP 55	AT 65 AP 65	TS 55	AP 85 AP 88 AXP 88
160x2.2x20 PW12	496301	•			
190x2.8x30 PW14	486298		•		
210x2.6x30 PW16	493196			•	
240x2.8x30 PW18	438698				•



717/12

Universal saw blade

For all wooden composites, building panels and soft plastics, medium cut

Type	Part No.	TS 55 ATF 55 AP 55	AT 65 AP 65	TS 55	AP 85 AP 88 AXP 88
160x2.2x20 W28	496302	•			
190x2.8x30 W32	490517		•		
210x2.6x30 W36	493198			•	
240x2.8x30 W32	490518				•



717/13

Fine tooth saw blade

For veneered and coated panels, solid wood, MDF, fine cut

Type	Part No.	TS 55 ATF 55 AP 55	AT 65 AP 65	TS 75	AP 85 AP 88 AXP 88
160x2.2x20 W48	491952	•			
190x2.8x30 W48	486297		•		
210x2.4x30 W52	493199			•	
240x2.8x30 W48	435187				•

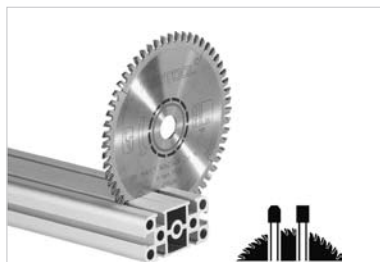


717/14

Special saw blade Laminate/Polymer

For laminate flooring and mineral materials (Corian, Varicor, etc.)

Type	Part No.	TS 55 ATF 55 AP 55	AT 65 AP 65	TS 75
160x2.2x20 TF48	496308	•		
190x2.6x30 TF54	489458		•	
210x2.4x30 TF60	493200			•



717/15

Special saw blade Aluminium/Glass fibre reinforced plastics

For aluminium panels and profiles, and glass fibre reinforced plastics

Type	Part No.	TS 55 ATF 55 AP 55	AT 65 AP 65	TS 75	AP 85 AP 88 AXP 88
160x2.2x20 TF56	496306	•			
190x2.8x30 TF68	486299		•		
210x2.4x30 TF72	493201			•	
240x2.8x30 TF80	438638				•



717/16

Flat top saw blade

For steel cable ducts, steel sheets, steel profiles

Type	Part No.	TS 75	AP 85
210x2.2x30 F36	493351	•	
240x2.6x30 F48	487271		•



717/17

Special saw blade

For hard building panels, cement-bonded fibreboard

Type	Part No.	AXT 50 LA
170x2.0x30 TF56	435450	•

FESTOOL

Our example for use is a recommendation tried and tested in practice. However the actual conditions pertaining in each situation are completely outside of our control. We therefore do not provide any form of guarantee. Any legal claims arising out of this are not to be made against Festool. Please observe without fail the safety and operating instructions included with the product.

www.festool.com